

# PureActiv<sup>®</sup>

## GEOSPATIAL VIDEO MANAGEMENT SYSTEM

PureActiv<sup>®</sup> is a Geospatial Video Management System (VMS) that incorporates a GIS map-based User Interface (UI) that provides ease of operation and advanced wide-area situational awareness. PureActiv<sup>®</sup> is designed to help protect borders, critical facilities, and infrastructures in many sectors. PureActiv<sup>®</sup> excels at providing security professionals with a comprehensive birds-eye view of their security situation.

### GIS MAP-BASED VIDEO MANAGEMENT

PureActiv<sup>®</sup> uses GIS map technology to display camera locations and their field-of-views, other detection devices, alarm events, and target tracks. In addition to live and recorded video the user interface includes map tools such as the ability to add and share place-markers, point-and-click on the map to steer cameras to geolocations, range-to-target indicator, and a distance measuring tool.

### GEOSPATIAL VIDEO ANALYTICS

The proven geospatial video analytics from PureTech Systems<sup>®</sup> outperforms other analytics in detection range, probability of detection (PD) and nuisance alarm rate (NAR). Its multistage processing pipeline includes image stabilization, shadow removal, multimodal background learning, segmentation, object recognition, and tracking. All combined these contribute to superior performance. In addition, the patented PTZ auto tracking analytic from PureTech Systems<sup>®</sup> enables PTZ cameras to automatically follow detected targets.

### ALARMING AND ALARM SEARCH

For each real-time alarm, PureActiv<sup>®</sup> displays a still image, looping video, live camera view, and geolocation, regardless of the sensor type that generated the alarm. PureActiv<sup>®</sup> incorporates alarm querying based on a number of user specified metadata criteria.

### ADVANCED AUTOMATED CAMERA CONTROL

When alarm events occur, cameras are automatically commanded to point at the precise geolocation of the event and zoomed appropriately. And users can simply click on the desired location on the GIS map to steer one or more cameras or acoustic deterrent devices (LRAD) to the selected location.



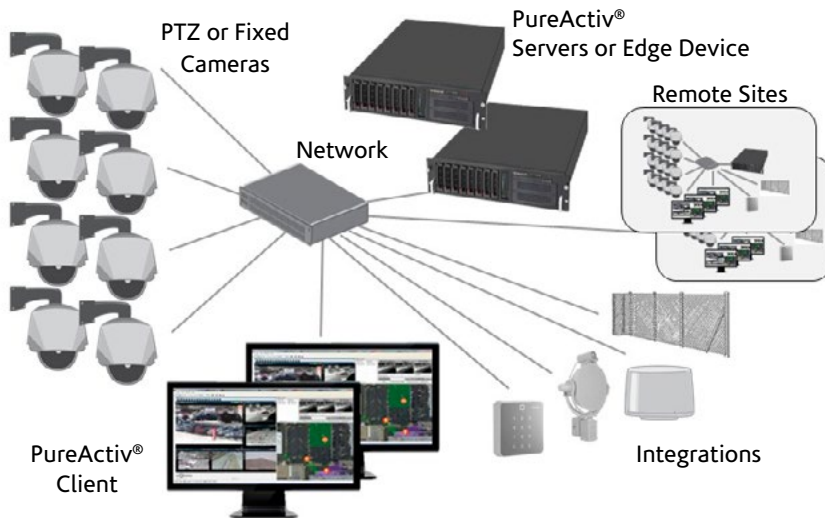
## FEATURES

- Geospatial User Interface Provides Comprehensive Birds-Eye View
- Commercial-Off-The-Shelf (COTS) Hardware
- Continuous and Alarm Video Recording
- Live Video and Event Alarming with Geolocations
- Multiple Workstations each with Multiple Monitors
- Automated PTZ Camera Steering to Alarm Locations
- Proven Geospatial Video Analytics
- PTZ Auto Tracking
- Alarm Search and Forensic Tools
- Video and Metadata Export Tools
- Supports HD cameras
- Integrates with RADAR, Fence Sensors, GPS, AIS, Access Control, LRAD
- Language Support: English, Spanish, French

**PureTech**  
SYSTEMS<sup>®</sup>

[ DETECT ] [ ANALYZE ] [ RESPOND ]

## SYSTEM ARCHITECTURE DIAGRAM



## VIDEO ANALYTICS

Recognition Ranges:

704x480: 9°/640m, 15°/380m, 30°/190m  
 1280x1024: 9°/1300m, 15°/800m, 30°/400m  
 2048x1536: 9°/2000m, 15°/1200m, 30°/600m  
 3840x2160: 70°/420m

Recognition / Classification (person, car, truck, small boat, large boat, etc.)

PTZ Auto Tracking

Slew to Cued Location / Search Scan

Geo-zone Entry / Exit

Wrong Direction

Speed Threshold

Counting / Crowding / Loitering / Dwell Time

Stopped / Dropped / Removed Objects

Camera Tampering

## INTEGRATIONS

Camera Brands: ACTi, American Dynamics, Axis, Bosch, FLIR, General Dynamics, Hitachi, L3, Moog, Panasonic, Pelco, PVP, Sony, Vicon, Vumii

Access Control Systems: JCI P2000, AMAG, Lenel, TAC, Software House, others via SNMP

Fence Sensors: Southwest Microwave Intrepid, Senstar

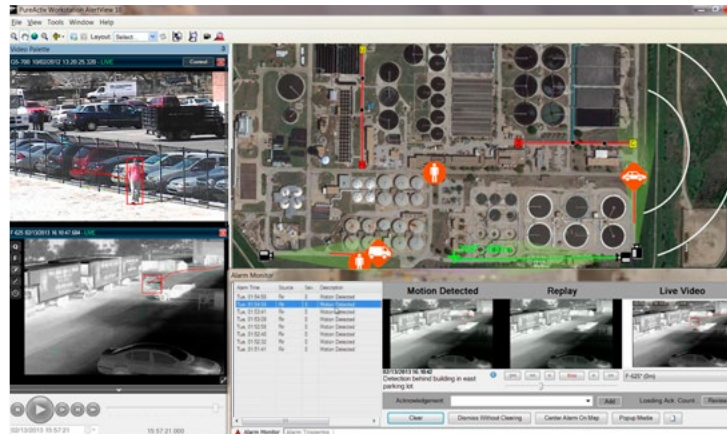
RADAR: FLIR, SSR, L3

Acoustic Loud Hailers: LRAD Corp.

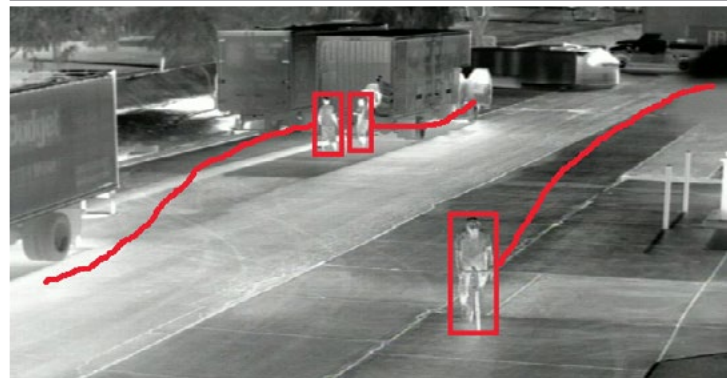
GPS: Remote Tracking Systems

AIS: Comar Systems

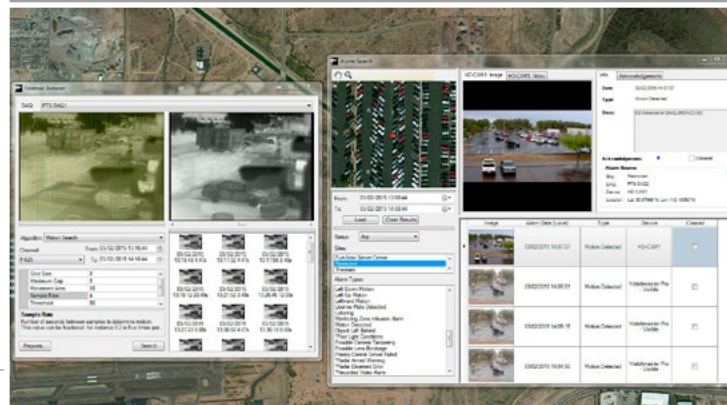
Your sensor not on the list? Contact PureTech Systems® to integrate.



## GIS MAP-BASED USER INTERFACE



## GEOSPATIAL VIDEO ANALYTICS



## VIDEO FORENSICS / META DATA



## PTZ AUTO TRACKING

T + 1.602.424.9842

@PureTechSystems

www.puretechsystems.com

**PureTech**  
SYSTEMS®