

# PureActiv® Scene Analyzer™

## VIDEO ANALYTICS EDGE DEVICE

### ADD VIDEO INTELLIGENCE TO SECURITY CAMERAS

The Scene Analyzer™ transforms basic video cameras into intelligent vision sensors. Its stand-alone design enables it to read, evaluate, record and react to video feeds for target detection and classification—without user intervention. Embedded software stabilizes the video image to remove camera and vibration effects, then isolates threats from nuisance objects, such as shadows and tree movements. When connected to a PTZ camera, it can perform smart tour functions, controlling the camera to stop at various scenes and analyzing that scene for different objects and behaviors. Once objects of interest are detected—based on user-specified criteria such as size, shape, direction and speed—the PureActiv® Scene Analyzer™ is able to track objects automatically using the camera's pan, tilt and zoom. Additionally it has the ability to store multiple days of video and alarms via its internal storage. This intelligent perimeter device is environmentally ruggedized to allow placement at remote sites and facilities.

### VMS INTEGRATION

The Scene Analyzer™ can operate as a stand-alone remote sensor, providing alarm information or utilizing its own client software to act as an intelligent NVR. It can also seamlessly integrate into an existing enterprise surveillance solution, such as an NVR or VMS. Use of an optional external module allows integration of external devices such as fence detection systems, gates, locks, lights and local alarms.

### VIDEO ANALYTICS

The Scene Analyzer™ enables you to add video analytics to a system in a much more scalable and affordable manner. Off-loading image processing to the edge allows your system and network to accommodate a higher number of inputs helping you save money and bandwidth.



## BENEFITS

- Proven Geospatial Video Analytics for Detection and Tracking
- Integrates with Existing NVRs and Video Management Systems
- Use as a Stand-Alone Sensor or as an Intelligent NVR/VMS
- Camera Agnostic - Enables You to Choose the Best Camera for the Job
- Geolocate Targets (Provides Exact Map Location)
- PTZ Auto Tracking
- PTZ Camera Steering to Alarm Locations
- Edge-Based Recording of Video and Alarm Information
- Point-and-Click PTZ Camera Control
- Software-Based Video Stabilization
- Fewer Nuisance Alarms

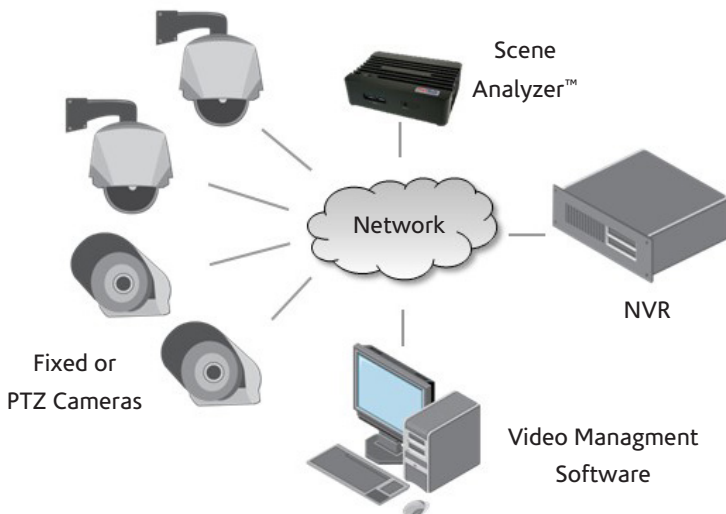
**PureTech**  
SYSTEMS®

[ DETECT ] [ ANALYZE ] [ RESPOND ]

## SPECIFICATIONS

Dimensions	Standard: 4.6" (H) x 4.4" (W) x 2.0" (D)
	High Temp: 6.5" (H) x 4.4" (W) x 1.9" (D)
Power	12 VDC - 19 VDC
	27 WATTS (Consumption)
Video	Resolutions: CIF/2CIF/4CIF/D1/1.2M/1.3M/2.0M/2K
	Frame Rates: up to 30 FPS
	Video Inputs (MJPEG, MPEG4, H.264): 4 channels at 704 x 480
Storage	1TB Standard (2TB Optional)
Inputs / Outputs	2 X USB 2.0 Ports (External)
	2 X USB 3.0 Ports (External)
	Digital Discrete Inputs/Outputs (optional)
	1 X Ethernet Gigabit RJ45
Environmental	-20° C to +50° C (Standard)
	-20° C to +65° C (High Temp)
	10%-95% Humidity / Non-Condensing
Detection	Example Distances (Human): 704 x 480: 9°/640m, 15°/380m, 30°/190m

## SYSTEM ARCHITECTURE DIAGRAM



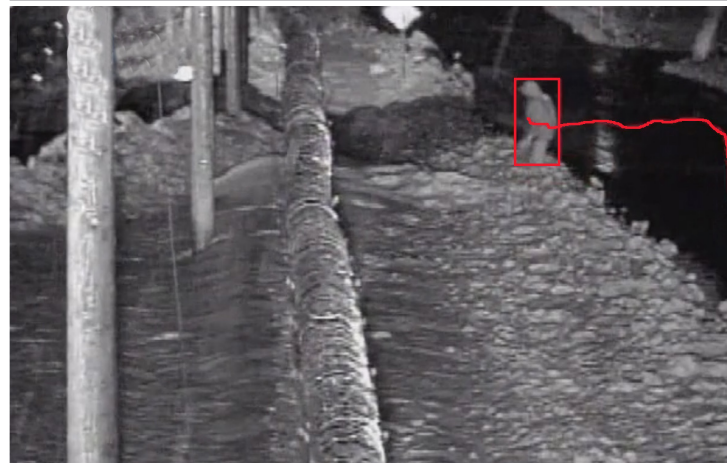
### GEOSPATIAL VIDEO ANALYTICS



### TARGET LOCATION, CLASSIFICATION & TRACKING



### INTEGRATES WITH EXISTING NVR/VMS



### DESIGNED FOR LOW FALSE ALARMS